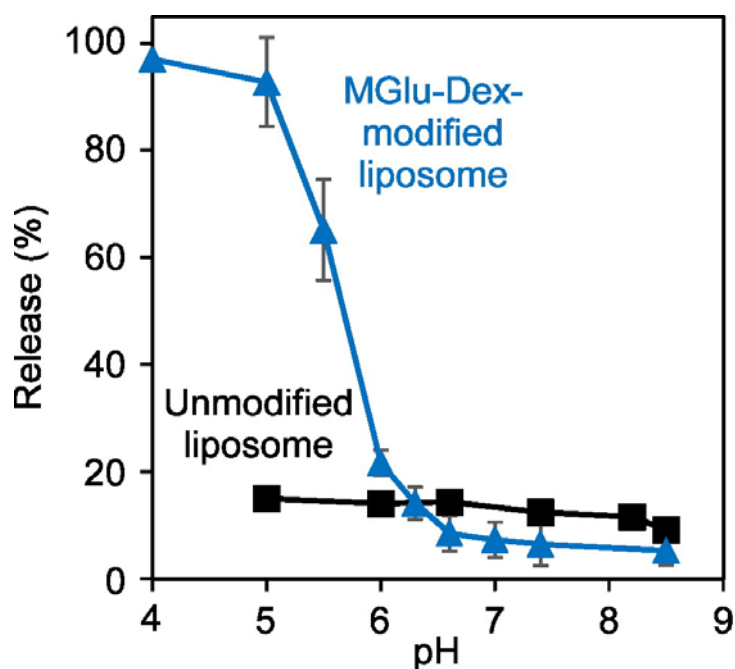
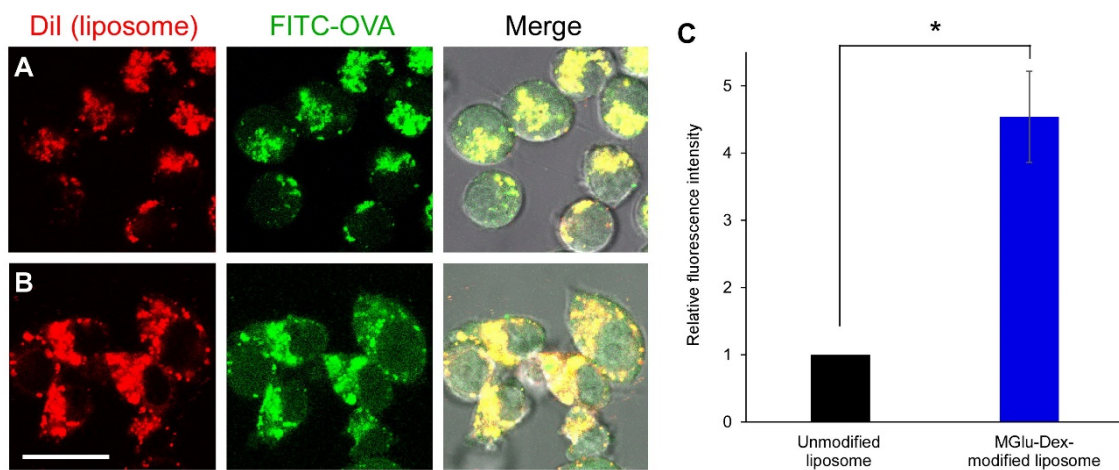


## Supporting information

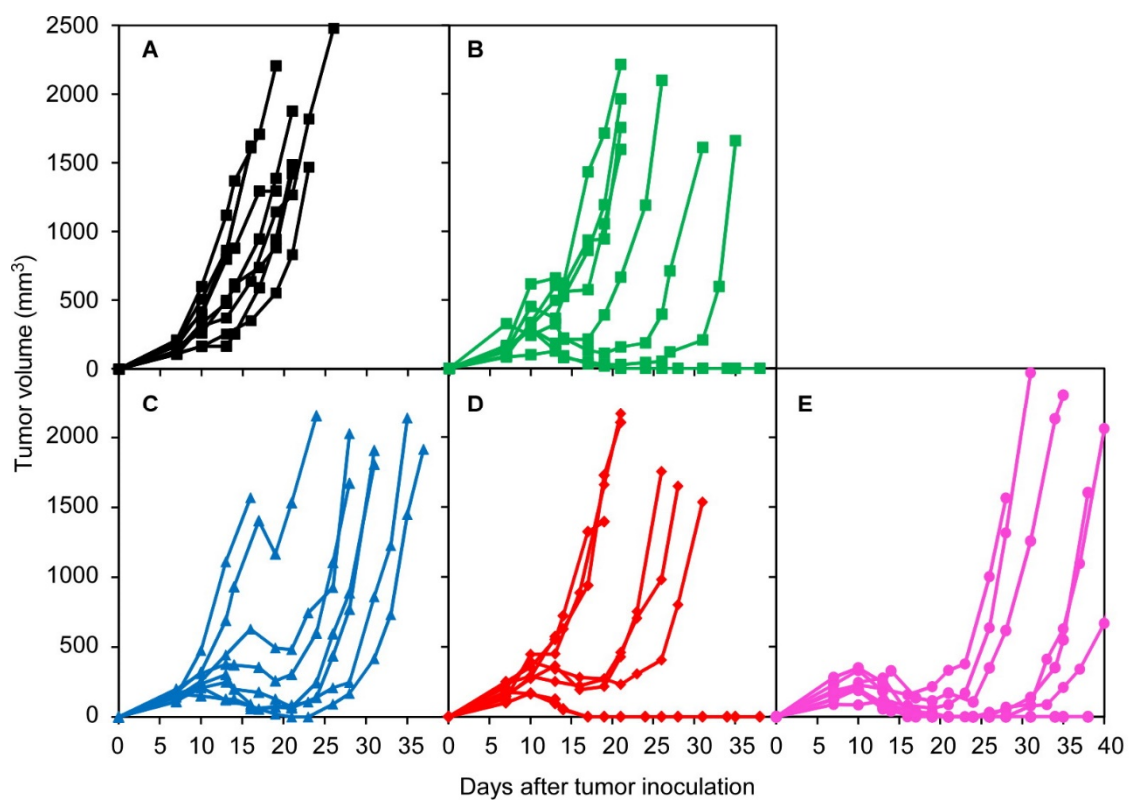
Potential of cancer immunity-inducing effect by pH-sensitive polysaccharide-modified liposomes with combination of TGF- $\beta$  type I receptor inhibitor-embedded liposomes



**Figure S1.** pH-dependence of pyranine release from EYPC liposomes modified with or without MGLu-Dex at 37 °C after 30-min incubation. Lipid concentrations were  $2.0 \times 10^{-5}$  M.



**Figure S2.** Confocal laser scanning microscopy (CLSM) images of DC2.4 cells treated with DiI-labeled and FITC-OVA-loaded EYPC liposomes modified without (A) or with (B) MGLu-Dex for 4 h at 37 °C in a serum-free medium. Scale bar represents 20  $\mu\text{m}$ . (C) Relative fluorescence intensity for DC2.4 cells treated with DiI-labeled liposomes modified with or without MGLu-Dex for 4 h at 37 °C in serum-free medium. Lipid concentration was  $5.0 \times 10^{-4}$  M.  $*p < 0.002$ .



**Figure S3.** Individual tumor volumes of C57BL/6 mice treated with PBS (A), SB lip/intravenously (B), OVA lip (C), both OVA lip and SB lip/intratumorally (D), and both OVA lip and SB lip/intravenously (E). Experimental conditions are presented in the Figure 4 caption.

**Table S1. Survival Analysis by Log-Rank Test for Figures 2E**

Comparison	<i>p</i> value
PBS vs SB lip ( <i>it</i> )	0.709
PBS vs <b>OVA lip</b>	0.00426***
PBS vs <b>OVA lip + SB lip (<i>it</i>)</b>	0.00426***
SB lip ( <i>it</i> ) vs <b>OVA lip</b>	0.00815**
SB lip ( <i>it</i> ) vs <b>OVA lip + SB lip (<i>it</i>)</b>	0.00815**
OVA lip vs OVA lip + SB lip	0.0979

\*\**p* <0.01, \*\*\**p* <0.005.

**Table S2. Survival Analysis by Log-Rank Test for Figures 4B**

Comparison	<i>p</i> value
PBS vs <b>SB lip (<i>iv</i>)</b>	0.0162*
PBS vs <b>OVA lip</b>	0.00175***
PBS vs <b>OVA lip + SB lip (<i>it</i>)</b>	0.0108*
PBS vs <b>OVA lip + SB lip (<i>iv</i>)</b>	0.0000326***
SB lip ( <i>iv</i> ) vs OVA lip	0.922
SB lip vs OVA lip + SB lip ( <i>it</i> )	0.762
SB lip vs OVA lip + SB lip ( <i>iv</i> )	0.0841
OVA lip vs OVA lip + SB lip ( <i>it</i> )	0.835
OVA lip vs <b>OVA lip + SB lip (<i>iv</i>)</b>	0.00701**
OVA lip + SB lip ( <i>it</i> ) vs OVA lip + SB lip ( <i>iv</i> )	0.305

\**p* <0.05, \*\**p* <0.01, \*\*\**p* <0.005.