

RESEARCH ARTICLE

Impacts of Transportation Emissions on the Risk of Mortality: Findings from the Literature and Policy Implications

Authors

Razieh Nadafianshahamabadi^{a,b}, Mohammad Tayarani^a, H. Oliver Gao^{a,*}

Affiliations

^a Cornell University, School of Civil & Environmental Engineering, 220 Hollister Dr, Ithaca, NY 14853

^b Environmental Defense Fund, 257 Park Avenue South, New York, NY 10010, United States of America

* Corresponding author:

H. O. Gao

Email: hg55@cornell.edu

Abstract

Introduction: Externalities from transportation, and in particular exposure to vehicle emissions have been considered a possible cause of several negative health outcomes including mortality. However, the existing findings are too inconsistent to drive a well-founded exposure-response function to be fully exploited to curb the negative impacts of transportation systems on public health. In this study, we investigate the association between exposure to air pollution and mortality. We then evaluate how using different air quality methods may result in detecting different health outcomes.

Methods: We conduct an analysis of reviewing a representative sample of main published studies that specifically focused on the association between vehicle air pollution and mortality.

Results: Our study finds that vehicle air pollution may increase the risk of mortality through a slightly high association. Most importantly, the risk of overall mortality increases by 5% per 10 $\mu\text{g}/\text{m}^3$ increase in NO_2 concentration, 2% per unit of traffic intensity on the road, and 7% per unit of distance closer to the road.

Conclusion: The findings imply the role of exposure to vehicle emissions in increasing the risk of mortality. The method used to detect the health outcomes can alter the health finding from positive to null or vice versa and even extensively affect the analysis outcomes. The results suggest the need for establishing indicators to benchmark the performance of air quality methods and emphasize the necessity to integrate public health measures into the urban and transportation planning process.

Keywords: Transportation Emissions, Cardiovascular, Meta-Analysis, Mortality, Air Pollution, Land-use Regression Model

1. Introduction

Vehicle traffic is responsible for a large portion of toxic air pollutant emissions in urban areas such as particulate matter, ozone, carbon monoxide, and nitrogen oxide. Epidemiological studies found an association between exposure to vehicle emissions and adverse health outcomes¹⁻¹⁰, such as chronic respiratory and heart diseases. Epidemiological studies first estimate exposure to vehicle emissions and then use a cohort or a case-control approach to evaluate the association between vehicle pollution and adverse health outcomes.

While the research in recent decades shows the adverse effects of air pollution on health, but it is still too inconsistent to introduce a well-founded concentration-response function to quantify the relationship between traffic-related air pollution and health outcomes. Methods of quantifying air pollution, which model how air pollutants disperse over the surrounding terrain range from simple surrogate models to more complex models that provide higher temporal resolutions for air pollutant concentration^{11,12}. The main approaches used in most epidemiologic studies are proximity, intensity, land use regression (LUR), and dispersion models. Using proximity models is the most basic approach, which considers the distance to the source of pollution, such as distance to a major roadway, to estimate exposure to vehicle emissions¹². The intensity approach considers the intensity of the source of pollution, such as traffic volume. LUR measures the relationship between pollutant concentrations and relevant environmental variables¹³. The dispersion model estimates air pollution

concentrations using input data on emissions and numerical formulations such as Gaussian plume equations^{12,14}.

The models of quantifying the adverse effects of traffic-related air pollution on health perform differently and there has been little research, if any, on evaluating the performance of different models on epidemiological findings. There is some evidence that the more sophisticated dispersion models perform better than the simple dispersion models, but there has been little quantitative research investigating how different models affect the results of epidemiological studies. A study by Molitor et al.¹⁵ compared the association between exposure to NO₂ and lung function using CALINE4, an air dispersion model, and a monitoring method. They report that the monitoring method overestimates the association by 15% compared to the dispersion model. Wu et al.¹⁶ compared the performance of the CALINE4, a LUR model, a traffic intensity model, and concentration measured at the nearest central site monitoring station. They found that the highest difference in the association between exposure to vehicle emissions and adverse pregnancy outcomes is 17%, observed for the monitored PM_{2.5} concentration versus the concentration modeled with CALINE4. Zou et al.¹⁷ reviewed a large number of studies to compare the performance of the proximity and hybrid models and found that the results from the proximity methods are questionable. However, most prior research has been limited to small study samples. Moreover, prior research mostly accounted for ambient air pollution and not specifically for vehicle air pollution. This distinction is crucial

because the rapid decline in vehicle air pollution concentration from the edge of the road and the chemical composition of traffic emissions are different from ambient air pollution¹⁸.

In this study, we aimed to understand how different air pollution exposure methods may result in different outcomes by conducting an analysis of reviewing a representative sample of main published studies that specifically focused on the association between vehicle air pollution and mortality. The contribution of this study is to find whether using different exposure approaches causes differences in reported health outcomes and whether sophisticated approaches have also resulted in more accurate epidemiological inferences. The outcome of this study contributes to discussions of investing in expensive, sophisticated air pollution methods and allows for the evaluation of benefits from the change in adverse health outcomes due to vehicle emissions and the determination of whether the investments are justifiable.

2. Methodology

Cases of mortality attributed to transportation-related air pollution are derived from the health outcomes itemized in table 1. These studies are included because they met the following criteria: are human-based epidemiologic studies written in English; provide a quantitative value, such as relative risk (RR), hazard ratio (HR), or odds ratio (OR) and their confidence intervals (CI) or standard errors (SE), for change in mortality associated with vehicle air

pollution; and estimate the contribution to pollution concentration from road traffic instead of ambient or background air pollution. Vehicular air pollution is recognized as different from ambient air pollution if a study uses one of the following approaches to measure pollution exposure: proximity models, which measure the distance to traffic sources, such as roads/highways; intensity models, which define traffic intensity, such as traffic volume; land use regression models which measure NO₂; and dispersion models, which are based on the road and mobile sources. If there were multiple studies that considered the same or overlapping cohorts, we included the study that had the longest follow-up period or had a greater sample of the population under study. Excluded studies either do not investigate the association between vehicle emission and mortality or they did investigate impacts of ambient air pollution and not traffic-related air pollution. We also exclude those studies that specifically investigated the association between mortality and vehicle emission in a particular subgroup of the population, such as cases with a lung transplant, myocardial survivors, survival of heart failure, and post-stroke cases.

Table 1 shows the characteristics of the total of twenty studies included in our study. The studies are published between 2000-2017, ten of which cover North America. A total of 31,943,248 adults who were followed up from the 1980s to 2013 were included in this study.

Table 1. Characteristics of studies included in the meta-analysis

Author	Measure	Country	Year	Age	Study type
Beelen et al., 2008 ¹⁹	RR	Netherland	1987-1996	55-69	Prospective Cohort
Cesaroni et al., 2013 ²⁰	HR	Rome	2001-2010	≥ 30	Cohort
Chen et al., 2013 ²¹	RR	Canada	1982-2004	35-85	Cohort
Finkelstein et al., 2004 ²²	RR	Canada	1992-2001	≥40	Cohort
Finkelstein et al., 2005 ²³	RR	Canada	1985-1999	≥40	Cohort
Gehring et al., 2006 ²⁴	RR	Germany	1980s-1990s	50-59	Cohort
Hoek, 2002 ²⁵	RR	Netherland	1986-1994	55-69	Cohort
Jerrett et al., 2009 ²⁶	RR	Canada	1992-2002	NA	Cohort
Jerrett et al., 2005 ¹²	RR	USA	1982-2000	NA	Cohort
Maheswaran & Elliott, 2003 ²⁷	RR	UK	1990-1992	≥45	Ecological
Rosenlund et al., 2009 ²⁸	OR	Sweden	1985-1996	15-79	Case-Control
Gan et al., 2010 ³	RR	Canada	1994-1998	45-85	Cohort
Yorifuji et al., 2013 ²⁹	HR	Japan	1999-2009	NA	Cohort
Turner et al., 2017 ³⁰	HR	USA	1982-2004	≥30	Cohort
Crouse et al., 2015 ³¹	HR	Canada	1991-2006	25-89	Cohort
Thurston et al., 2016 ³²	HR	USA	1982-2004	≥30	Cohort
Raaschou-Nielsen et al., 2012 ³³	MRR	Denmark	1993-2009	50-64	Cohort
Pedde et al., 2017 ³⁴	OR	USA	2009-2013	NA	Case-Crossover
Bidoli et al., 2016 ³⁵	RR	Italy	1990-2010	NA	Ecological
Halonan et al., 2016 ³⁶	RR	UK	2003-2010	≥25	-

RR: relative risk; HR: hazard ratio; OR: odds ratio; MRR: mortality rate ratio; NA: not available.

To synthesize the data, the effect estimates related to NO₂, PM_{2.5}, CO, and PM₁₀ were all converted to a standard increment, 10 µg/m³, in pollution concentration. Parts per billion (ppb) units of concentration were converted into micrograms per cubic meter using a factor of 1.88 for NO₂, and 1.145 for CO. The following formula was then used to convert the other values in µg/m³ to 10 µg/m³.

$$RR_{Standard} = \exp(\ln(RR_{Origin}) / \text{Increment}_{Origin} \times \text{Increment}_{Standard}) \quad (1)$$

The hazard ratio, odds ratio, and relative risk of mortality were considered the measure of association between air quality and mortality across studies. While each study might report different effect sizes using different approaches, we extracted the effect estimates that were adjusted for confounding factors and discussed them as the main results by the

authors. One of the following equations is used to calculate the standard error of the effect.

$$\text{Standard Error (SE)} = (\ln \text{RR} - \ln \text{Lower CI}) / 1.96 \quad (2)$$

$$\text{Standard Error (SE)} = (\ln \text{Upper CI} - \ln \text{RR}) / 1.96 \quad (3)$$

To combine the outcomes of studies and calculate the pooled effect estimates, a random-effects model meta-analysis technique was performed, which accounts for the risk of heterogeneity in the effect size reported, unlike the fixed-effect estimation. Two-sided tests with a significance level of 0.05 were conducted. *Q* and *I*² were both used to evaluate the heterogeneity within the studies. The null hypothesis that the studies were homogeneous was rejected if the *p*-value was less than 0.10 or the *I*² was greater than 50%³⁷. Subgroup analyses were also

performed on the cause of mortality (all-cause mortality, cardiovascular mortality, and respiratory mortality) and air pollutants (NO₂, PM_{2.5}, CO, traffic intensity, and distance to the road). Forest plots were created to provide visual representations of the distribution of studies (i.e., gray squares), subtotal effects (i.e., purple diamonds), and overall effects (i.e., red diamonds). The plots help to interpret the results where for each study the wider the confidence interval means less reliability and the overall effects are significant if diamonds do not cross the dashed red line.

3. Results

3.1. All-Cause Mortality

The pooled estimate of all-cause mortality risk due to exposure to NO₂ concentration, traffic intensity, and distance to highway contains fifteen studies (Table 2 and Figure 1). Among the modeling methods, Jerret et al.²⁶ reported the highest association, with an 18% increase in the risk of all-cause mortality

associated with a 10 µg/m³ increase in exposure to NO₂ concentration, modeled by a LUR model. While the highest association reported by the intensity method was 1.04 (95% CI=1.03-1.06) by Cesaroni et al.²⁰, the proximity method resulted in a 1.41 (95% CI=0.94-2.12) risk reported by Hoek et al.²⁵. The estimated overall risk ratio of 1.04 indicates that exposure to vehicle pollution can significantly increase all-cause mortality by 4% (95% CI=1.02-1.06). Exposure to pollution, measured by the distance from the place of residence to major roads, has the highest but non-significant association with the all-cause mortality, 1.07 (95% CI=0.98-1.15). The overall effects of the exposure to NO₂ and traffic intensity both have positive and significant effects on mortality, by a 5% and 2% increase in risk, respectively. The overall 88% *I*² shows that high heterogeneity existed among these studies and indicates that the variability across studies is due to genuine differences rather than chance.

Table 2. Pooled Estimate of Relative Risks of All-Cause Mortality from Exposure to Traffic-Related Emission

Study	RR (95% CI)	Metric	Exposure
Raaschou-Nielsen et al., 2012 ³³	1.08 (1.01, 1.15)	NO ₂ (10 µg/m ³)	Dispersion
Halonen et al., 2016 ³⁶	0.99 (0.97, 1.01)	NO ₂ (10 µg/m ³)	Dispersion
Cesaroni et al., 2013 ²⁰	1.03 (1.02, 1.04)	NO ₂ (10 µg/m ³)	LUR
Jerrett et al., 2009 ²⁶	1.18 (0.95, 1.45)	NO ₂ (10 µg/m ³)	LUR
Yorifuji et al., 2013 ²⁹	1.12 (1.07, 1.17)	NO ₂ (10 µg/m ³)	LUR
Crouse et al., 2015 ³¹	1.03 (1.02, 1.04)	NO ₂ (10 µg/m ³)	LUR
Subtotal effect I² = 96.18%, p < 0.0001	1.05 (1.00, 1.10)		
Beelen et al., 2008 ¹⁹	1.02 (0.97, 1.12)	Traffic intensity in 100 m	Intensity
Cesaroni et al., 2013 ²⁰	1.04 (1.03, 1.06)	Traffic intensity in 150 m	Intensity
Beelen et al., 2008 ¹⁹	1.03 (1.00, 1.08)	Traffic intensity on nearest road	Intensity
Cesaroni et al., 2013 ²⁰	1.01 (1.00, 1.02)	Traffic intensity on the road 10,000< vehicles per day	Intensity
Subtotal effect I² = 69.48%, p = 0.0087	1.02 (1.00, 1.04)		
Jerrett et al., 2005 ¹²	0.98 (0.89, 1.06)	Distance to a highway (1000 m)	Proximity
Gehring et al., 2006 ²⁴	1.29 (0.93, 1.78)	Distance to a major road (50 m)	Proximity
Finkelstein et al., 2004 ²²	1.18 (1.02, 1.38)	Distance to a major road (50 m) and a highway (100 m)	Proximity
Hoek et al., 2002 ²⁵	1.41 (0.94, 2.12)	Distance to a major road (50 m) and highway (100 m)	Proximity
Beelen et al., 2008 ¹⁹	1.05 (0.97, 1.12)	Distance to a major road	Proximity
Subtotal effect I² = 57.63%, p = 0.045	1.07 (0.98, 1.15)		
Overall effect I² = 88.67%, p < 0.0001	1.04 (1.02, 1.06)		

Note: RR=relative risk; CI= confidence interval; µg/m³ = microgram per cubic meter; m= meter; LUR: land-use regression; null hypothesis that studies are homogeneous is rejected if p < 0.10 or I² > 50%.

Figure 1 provides a summary of the studies by examining the change in all-cause mortality risk associated with traffic exposure. While most studies expectedly indicated an increased relative risk of mortality due to exposure to vehicle pollution, some studies did not provide enough evidence of a significant association. Four studies found a significant relationship between all-cause mortality and a 10 µg/m³

increase in NO₂, a well-known traffic marker^{20,29,31,33}. Two studies that used traffic intensity as a measure found a significant, but weak association between change in mortality and vehicle pollution^{19,20}. Only one study found a significant association between distance to the road and risk of mortality²², but the rest mostly found a strong but insignificant association^{19,24,25}.

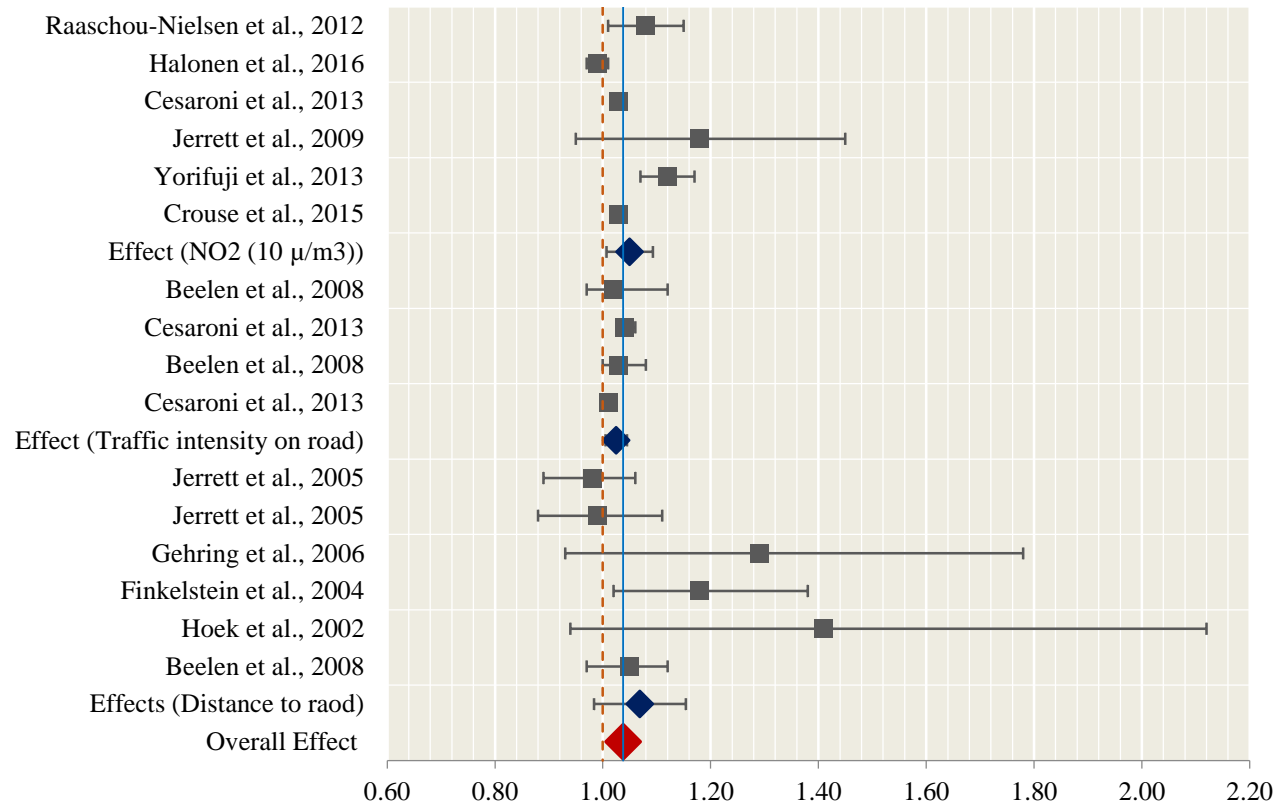


Figure 1. Forest Plot of Relative Risk (RR) Of All-Cause Mortalities Associated with Traffic-Related Air Pollution

3.2. Cardiovascular Mortality

We estimate 1.07 as a pooled relative risk of cardiovascular mortality due to exposure to traffic-related emission, which is higher than the overall risk of all-cause mortality. Table 3 shows the estimates from individual studies together with pooled estimates of the relative risk of cardiovascular mortality associated with traffic-related air pollution. Figure 2 presents a forest plot to summarize the findings of studies that examine the change in cardiovascular mortality associated with traffic-related air pollution. The overall relative risk of cardiovascular mortality from sub-groups ranges between 1.04 for the

traffic intensity method to 1.17 for the proximity method. Those who live within 50 meters of major roads have a higher risk of cardiovascular mortality. As expected, the results also show that a 10 µg/m³ increase in exposure to PM_{2.5} is associated with a 1.08 (1.04-1.11) risk of mortality, which is higher than the cardiovascular mortality risk of exposure to NO₂ where 10 µg/m³ increase in exposure is associated with 1.06 (1.02-1.10) risk of mortality. Similar to all-cause mortality, the intensity measures found a weaker association, 1.04 (1.02-1.05), between exposure to vehicle emissions and cardiovascular mortality.

Table 3. Pooled Estimate of Relative Risks of Cardiovascular Mortality from Exposure to Traffic-Related Emission

Study	RR (95% CI)	Metric	Exposure
Jerrett et al., 2005 ¹²	1.05 (0.89, 1.24)	Distance to a highway (1000 m)	Proximity
Beelen et al., 2008 ¹⁹	1.05 (0.93, 1.18)	Distance to a major road	Proximity
Finkelstein et al., 2005 ²³	1.38 (1.07, 1.78)	Distance to a major road (50 m) and a highway (100 m)	Proximity
Hoek et al., 2002 ²⁵	1.95 (1.09, 3.52)	Distance to a major road (50 m) and a highway (100 m)	Proximity
Gan et al., 2010 ³	1.29 (1.18, 1.41)	Distance to a major road (50 m) and a highway (150 m)	Proximity
Chen et al., 2013 ²¹	1.04 (1.00, 1.08)	Distance to a major road (50 m)	Proximity
Gehring et al., 2006 ²⁴	1.70 (1.02, 2.81)	Distance to a major road (50 m)	Proximity
Subtotal effect I² = 92.91%, p < 0.0001	1.17 (1.03, 1.31)		
Rosenlund et al., 2009 ²⁸	1.02 (0.98, 1.05)	CO (10 µg/m ³)	Dispersion
Cesaroni et al., 2013 ²⁰	1.03 (1.02, 1.04)	NO ₂ (10 µg/m ³)	LUR
Chen et al., 2013 ²¹	1.09 (1.05, 1.12)	NO ₂ (10 µg/m ³)	LUR
Rosenlund et al., 2009 ²⁸	1.03 (1.00, 1.07)	NO ₂ (10 µg/m ³)	Dispersion
Yorifuji et al., 2013 ²⁹	1.22 (1.15, 1.30)	NO ₂ (10 µg/m ³)	LUR
Crouse et al., 2015 ³¹	1.03 (1.02, 1.03)	NO ₂ (10 µg/m ³)	LUR
Raaschou-Nielsen et al., 2012 ³³	1.08 (0.89, 1.30)	NO ₂ (10 µg/m ³)	Dispersion
Halonen et al., 2016 ³⁶	0.93 (0.86, 0.98)	NO ₂ (10 µg/m ³)	Dispersion
Subtotal effect I² = 99.12%, p < 0.0001	1.06 (1.02, 1.10)		
Rosenlund et al., 2009 ²⁸	1.20 (1.04, 1.40)	PM ₁₀ (10 µg/m ³)	Dispersion
Cesaroni et al., 2013 ²⁰	1.06 (1.04, 1.08)	PM _{2.5} (10 µg/m ³)	Dispersion
Thurston et al., 2016 ³²	1.13 (0.96, 1.33)	PM _{2.5} (10 µg/m ³)	Monitors
Subtotal effect I² = 62.45%, p = 0.0833	1.08 (1.04, 1.11)		
Beelen et al., 2008 ¹⁹	1.00 (0.92, 1.08)	Traffic intensity in 100 m	Intensity
Cesaroni et al., 2013 ²⁰	1.05 (1.02, 1.07)	Traffic intensity in 150 m	Intensity
Beelen et al., 2008 ¹⁹	0.96 (0.88, 1.03)	Traffic intensity on the road with 1,255 to 10,000 vehicles per day	Intensity
Beelen et al., 2008 ¹⁹	1.11 (0.99, 1.25)	Traffic intensity on the road with 10,000 < vehicles per day	Intensity
Cesaroni et al., 2013 ²⁰	1.03 (1.01, 1.05)	Traffic intensity on the road with 10,000 < vehicles per day	Intensity
Subtotal effect I² = 2.23%, p = 0.2309	1.04 (1.02, 1.05)		
Overall effects I² = 97.49%, p < 0.0001	1.07 (1.04, 1.09)		

Note: RR=relative risk; CI= confidence interval; µg/m³ = microgram per cubic meter; m= meter; LUR: land-use regression; null hypothesis that studies are homogeneous is rejected if p < 0.10 or I² > 50%.

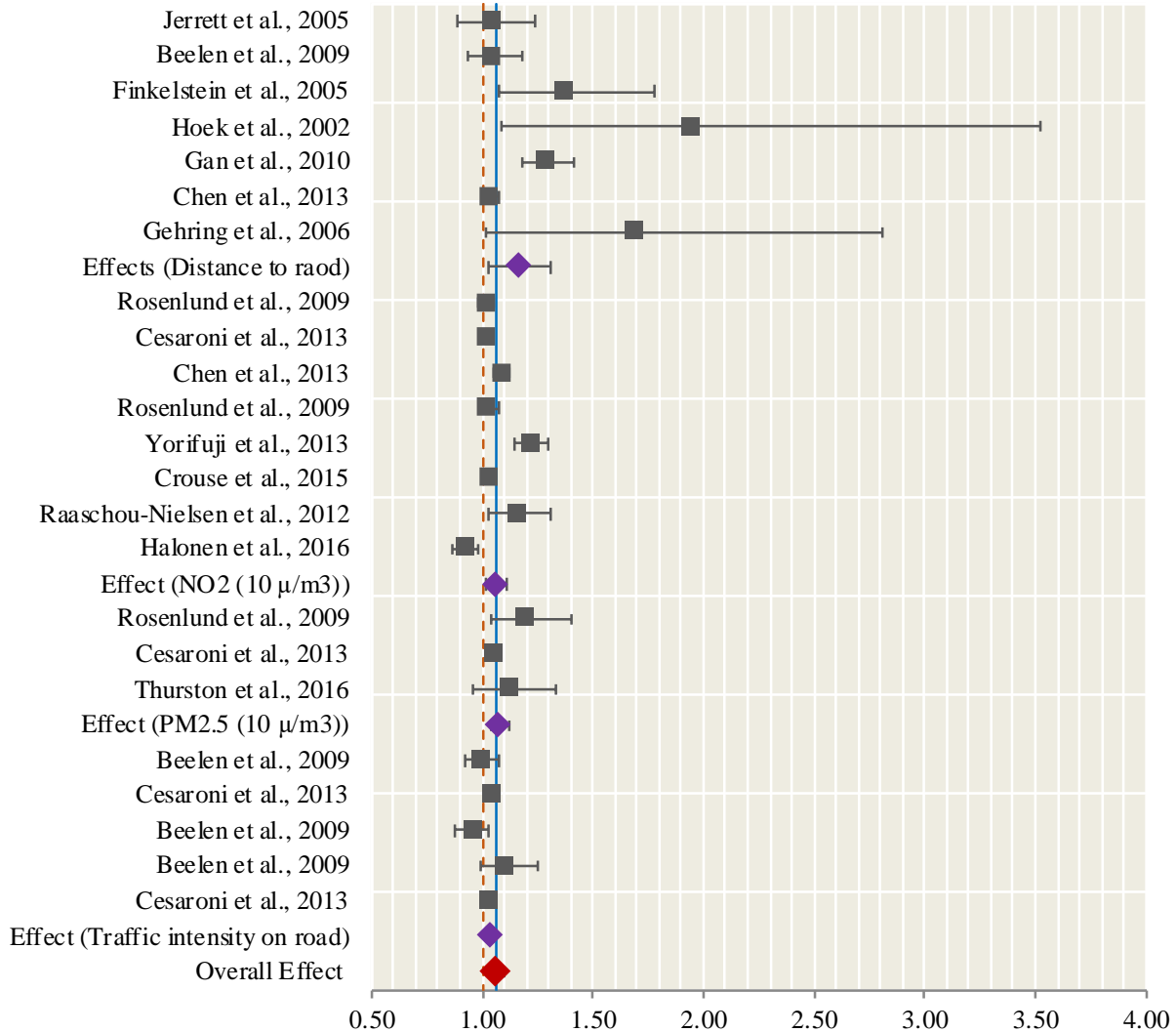


Figure 2. Forest Plot of Relative Risk (RR) of Cardiovascular Mortalities Associated with Traffic-Related Air Pollution

3.3. Respiratory Mortality

Unlike what the literature has reported on the high association between respiratory diseases⁶, such as asthma and COPD, a weak association was found between respiratory mortality and exposure to vehicle emissions, with the exception of the study by Jerrett et al.¹² that reports a 44% increase in the risk of respiratory mortality for those living within 500 meters of major roadways. We find that no matter what method is used, all resulted in

a weak association (Figure 3). The overall results were also affected by low heterogeneity ($I^2 = 18.37\%$) showing that less inconsistency exists between these studies. Aside from proximity to roads, at the highest level, there was a 20% increase in the risk of mortality due to respiratory diseases reported by Beelen et al.¹⁹ and Yorifuji et al.²⁹ in which the latter used the proximity method and the former used a 10 µg/m³ increase in the exposure to NO₂ (Table 4).

Table 4. Pooled Estimate of Relative Risks of Respiratory Mortality from Exposure to Traffic-Related Emission

Study	RR (95% CI)	Metric	Exposure
Jerrett et al., 2005 ¹²	1.44 (0.94, 2.21)	Distance to a highway (500 m)	Proximity
Beelen et al., 2008 ^{19, a}	1.19 (0.91, 1.56)	Distance to a major road	Proximity
Beelen et al., 2008 ^{19, b}	1.20 (0.98, 1.47)	Distance to a major road	Proximity
Finkelstein et al., 2005 ^{23, a}	0.96 (0.72, 1.27)	Distance to a major road (50 m) and highway (100 m)	Proximity
Pedde et al., 2017 ^{34, a}	1.06 (0.76, 1.5)	Distance to a road (150 m)	Proximity
Pedde et al., 2017 ^{34, a}	1.02 (0.95, 1.10)	Distance to a road (150-300 m)	Proximity
Bidoli et al., 2016 ^{35, a}	1.04 (0.92, 1.23)	Distance to a road (100 m)	Proximity
Bidoli et al., 2016 ^{35, b}	1.05 (0.97, 1.12)	Distance to a road (100-500 m)	Proximity
Subtotal Effect I² = 0, p = 0.3186	1.04 (1.01, 1.08)		
Cesaroni et al., 2013 ^{20, a}	1.03 (1.00, 1.06)	NO ₂ (10 µg/m ³)	LUR
Cesaroni et al., 2013 ^{20, b}	1.04 (1.02, 1.07)	NO ₂ (10 µg/m ³)	LUR
Yorifuji et al., 2013 ^{29, b}	1.20 (1.03, 1.40)	NO ₂ (10 µg/m ³)	LUR
Crouse et al., 2015 ^{31, c}	1.05 (1.03, 1.06)	NO ₂ (10 µg/m ³)	LUR
Crouse et al., 2015 ^{31, d}	1.02 (1.01, 1.04)	NO ₂ (10 µg/m ³)	LUR
Subtotal Effect I² = 55.43%, p = 0.0118	1.03 (1.02, 1.05)		
Cesaroni et al., 2013 ^{20, a}	1.03 (0.97, 1.08)	PM _{2.5} (10 µg/m ³)	Dispersion
Cesaroni et al., 2013 ^{20, b}	1.05 (1.01, 1.10)	PM _{2.5} (10 µg/m ³)	Dispersion
Subtotal Effect I² = 0, p = 0.5677	1.04 (1.00, 1.07)		
Beelen et al., 2008 ^{19, a}	1.21 (1.02, 1.44)	Traffic intensity in 100 m	Intensity
Beelen et al., 2008 ^{19, b}	1.07 (0.93, 1.23)	Traffic intensity in 100 m	Intensity
Cesaroni et al., 2013 ^{20, a}	1.08 (1.00, 1.15)	Traffic intensity in 150 m	Intensity
Cesaroni et al., 2013 ^{20, b}	1.03 (0.97, 1.09)	Traffic intensity in 150 m	Intensity
Beelen et al., 2008 ^{19, a}	1.10 (0.95, 1.26)	Traffic intensity on nearest road	Intensity
Beelen et al., 2008 ^{19, b}	1.07 (0.96, 1.19)	Traffic intensity on nearest road	Intensity
Cesaroni et al., 2013 ^{20, a}	1.01 (0.95, 1.08)	Traffic intensity on the road with 10,000< vehicles per day	Intensity
Cesaroni et al., 2013 ^{20, b}	0.99 (0.94, 1.05)	Traffic intensity on the road with 10,000< vehicles per day	Intensity
Subtotal Effect I² = 27.56%, p = 0.1795	1.04 (1.00, 1.08)		
Overall effects I² = 18.37%, p = 0.0832	1.03 (1.02, 1.05)		

Note: RR=relative risk; CI= confidence interval; µg/m³ = microgram per cubic meter; m= meter; LUR: land-use regression; null hypothesis that studies are homogeneous is rejected if p < 0.10 or I² > 50%.

^a Respiratory disease;

^b Lung cancer;

^c Trachea, bronchus, and lung cancers;

^d Diseases of the respiratory system;

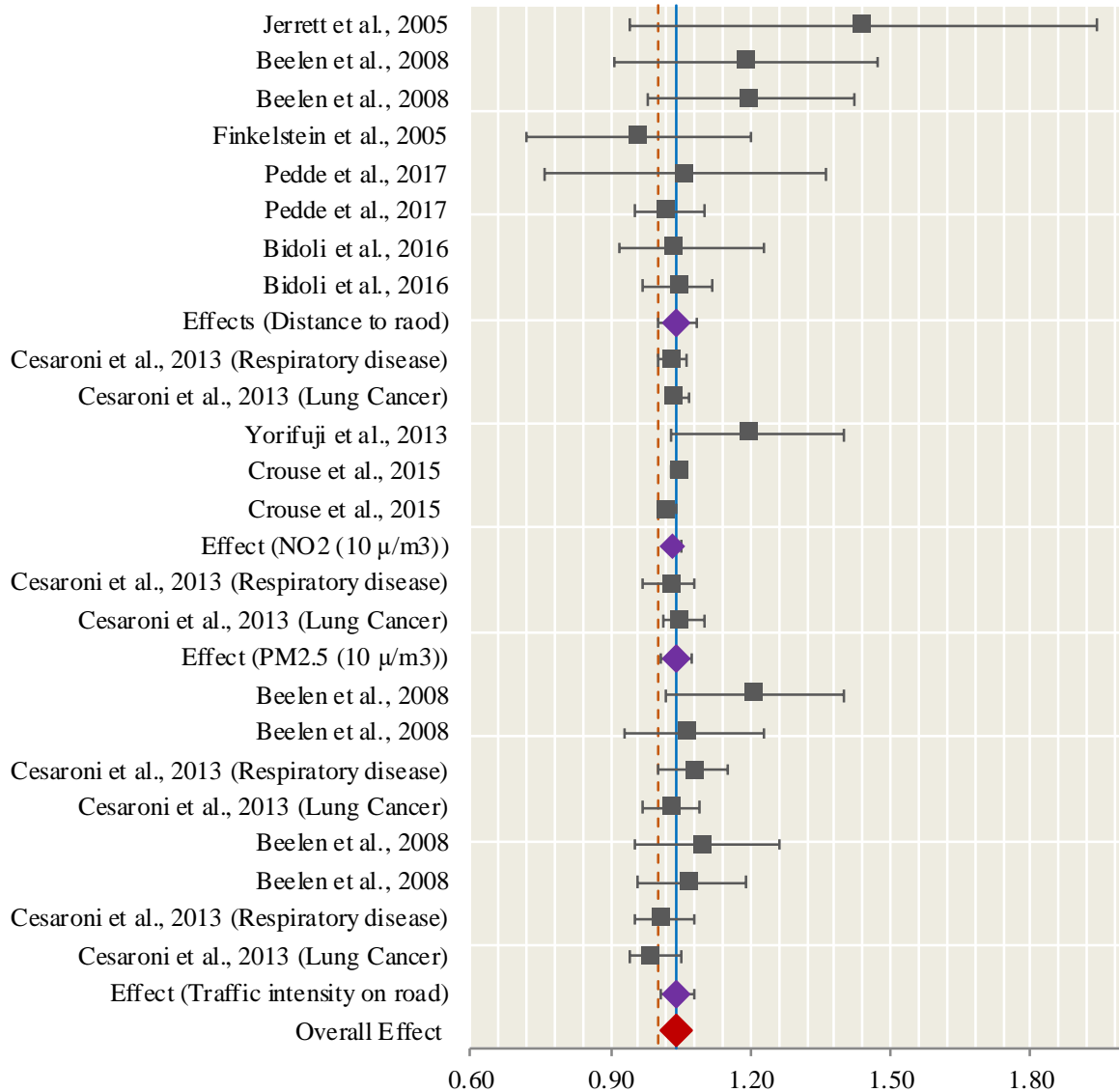


Figure 3. Forest Plot of Relative Risk (RR) of Respiratory Mortalities Associated with Traffic-Related Air Pollution

4. Conclusion

In this study, we evaluated the association between exposure to vehicle emissions and mortality and analyzed how using different air quality models may result in different results. While the adverse health outcomes of exposure to vehicle emissions are investigated by many researchers, it is still unclear what exposure-response function can

fully measure the impacts of pollution from transportation on public health.

We chose mortality over the range of adverse health outcomes due to a larger body of available literature. We found an overall weak, but significant association between exposure to vehicle emissions and mortality. Our analysis of twenty epidemiological studies finds that the risk of mortality increases from exposure to vehicle

emissions; a 10 $\mu\text{g}/\text{m}^3$ increase in NO_2 concentrations increases the risk of overall mortality, cardiovascular mortality, and respiratory mortality by 5%, 6%, and 3% respectively. The risk of overall mortality, cardiovascular mortality, and respiratory mortality increases by 2%, 4%, and 4%, per unit of traffic intensity and increases by 7%, 17%, and 4% per unit of distance to the road. 10 $\mu\text{g}/\text{m}^3$ increase in $\text{PM}_{2.5}$ concentrations increases the risk of cardiovascular mortality, and respiratory mortality by 8% and 4%, respectively.

Our meta-analysis of findings on the association between exposure to vehicle emissions and negative health outcomes reveals a consistent increasing trend in the risk of mortality for those who are exposed to vehicle emissions. We, however, find that the exposure modeling method plays a key role in the magnitude of the association.

Despite these shreds of evidence, federally mandated air quality analyses related to the transportation sector provide very little information regarding exposure to air pollutants in vehicle exhaust. One example is the air quality analysis, the inventory analysis, conducted by planning agencies such as Metropolitan Planning Organizations (MPOs). Estimating emission inventory, however, is not an appropriate method to study the negative effects of vehicle emissions on human health because of the high gradient variation in air pollutant concentration³⁸. If MPOs fail to formulate the best plans and projects that address air quality problems, they waste large sums of money (roughly US\$350 billion each year) while also failing to address major issues pertaining to factors such as public health and

environmental equity, among other contemporary challenges³⁹. Therefore, a more detailed air quality analysis is required not only to evaluate exposure to transportation-related air pollution but also to select transportation projects that reduce the risk of adverse health effects. The findings along with previous findings⁴⁰ implied the necessity of integrated transportation, land use, and health planning so not only to save on urban infrastructure sectors' cost but also to promote preventive medicine and save on public health costs.

In this study, we also evaluated the potential driver of variation in health outcomes, the methods used to measure the exposure to vehicle emission. The results show that different exposure approaches can substantially affect analytical health outcomes. The results indicate that some surrogate models, such as proximity, tend to show a higher association, but traffic intensity finds a lower association between exposure to vehicle emission and mortality. It seems that for overall mortality and cardiovascular mortality, using proximity methods such as distance to major roads and highways shows a higher risk than other methods like LUR and dispersion. For respiratory mortality, the risks taken from all four methods, including LUR, dispersion, proximity, and intensity are almost equal. This finding was expected since the literature has shown the variability of air pollution within urban environments⁴¹ and in particular a rapid decline in pollution concentration from the edge of the roads⁴²; thus, traffic intensity measured in a buffer around the roads may be unable to capture the rapid decline in pollution concentration.

Based on the results, proximity methods are more reliable than what had been previously described in the literature, since the proximity methods more strongly agree with the mathematical modeling methods, such as air dispersion modeling. However, the uneven spatial distribution of vehicle emission exposure along with the population movement pattern during the daily activity makes the study of exposure to vehicle emissions very complex. The health and transportation sectors should consider the tradeoff between the simplicity of using the surrogate models against the accuracy of the mathematical air quality modeling and spatially detailed exposure analysis. Sophisticated models can be extremely complex and data hungry. The relatively large staffing, computers, and data requirements increase costs, while increasing complexity limits transparency and increases the risk of unseen modeling errors.

Although increase mortality risk due to exposure to vehicle emissions may seem small, one should consider that the majority of the available studies have been conducted in the developed countries. These countries have significantly tackled their air pollution challenges by establishing standards such as the Clean Air Act in the USA. Conducting rigorous epidemiology studies in the areas with high vehicle pollution concentration

around the world such as India, Mexico, and Iran we may further underlie the negative role of vehicle emissions on public health.

Although we aimed to cover all available studies, there might be studies that were omitted. While grouping studies together might also affect the calculated overall association, comparability of grouped studies is controlled for gender, age, income, and race. Grouping based on exposure metric methods may have also affected the overall association because every study has defined its specific exposure metric, which might be slightly different from that of the others. There is also a high possibility of publication bias due to the low and insignificant risk of association between exposure to traffic-related emission and mortality.

DISCLAIMER

The contents of this report reflect the views of the authors, who are responsible for the facts and the accuracy of the information presented herein. This document is disseminated in the interest of information exchange. The report is funded, partially or entirely, by a grant from the U.S. Department of Transportation's University Transportation Centers Program. However, the U.S. Government assumes no liability for the contents or use thereof.

5. References

1. Allen RW, Criqui MH, Diez Roux AV, et al. Fine Particulate Matter Air Pollution, Proximity to Traffic, and Aortic Atherosclerosis. *Epidemiology*. 2009;20(2):254-264. doi:10.1097/EDE.0b013e31819644cc
2. Brugge D, Durant JL, Rioux C. Near-highway pollutants in motor vehicle exhaust: A review of epidemiologic evidence of cardiac and pulmonary health risks. *Environmental Health*. 2007;6(1):23. doi:10.1186/1476-069X-6-23
3. Gan WQ, Tamburic L, Davies HW, Demers PA, Koehoorn M, Brauer M. Changes in Residential Proximity to Road Traffic and the Risk of Death From Coronary Heart Disease: *Epidemiology*. 2010;21(5):642-649. doi:10.1097/EDE.0b013e3181e89f19
4. Garshick E, Laden F, Hart JE, Caron A. Residence Near a Major Road and Respiratory Symptoms in U.S. Veterans. *Epidemiology*. 2003;14(6):728-736. doi:10.1097/01.ede.0000082045.50073.66
5. Gauderman WJ, Vora H, McConnell R, et al. Effect of exposure to traffic on lung development from 10 to 18 years of age: a cohort study. *Lancet*. 2007;369(9561):571-577. doi:10.1016/S0140-6736(07)60037-3
6. HEI. *Traffic-Related Air Pollution: A Critical Review of the Literature on Emissions, Exposure, and Health Effects*. Health Effects Institute; 2010. <http://pubs.healtheffects.org/view.php?id=334>
7. McConnell R, Berhane K, Yao L, et al. Traffic, Susceptibility, and Childhood Asthma. *Environ Health Perspect*. 2006;114(5):766-772. doi:10.1289/ehp.8594
8. Peters A, von Klot S, Heier M, et al. Exposure to Traffic and the Onset of Myocardial Infarction. *New England Journal of Medicine*. 2004;351(17):1721-1730. doi:10.1056/NEJMoa040203
9. Franco Suglia S, Gryparis A, Schwartz J, Wright RJ. Association between traffic-related black carbon exposure and lung function among urban women. *Environ Health Perspect*. 2008;116(10):1333-1337. doi:10.1289/ehp.11223
10. Wilhelm M, Ritz B. Residential proximity to traffic and adverse birth outcomes in Los Angeles county, California, 1994-1996. *Environ Health Perspect*. 2003;111(2):207-216.
11. Özkaynak H, Baxter LK, Dionisio KL, Burke J. Air pollution exposure prediction approaches used in air pollution epidemiology studies. *J Expos Sci Environ Epidemiol*. 2013;23(6):566-572. doi:10.1038/jes.2013.15
12. Jerrett M, Burnett RT, Ma R, et al. Spatial analysis of air pollution and mortality in Los Angeles. *Epidemiology*. 2005;16(6):727-736.
13. Briggs DJ, de Hoogh C, Gulliver J, et al. A regression-based method for mapping traffic-related air pollution: application and testing in four contrasting urban environments. *Science of The Total*

- Environment*. 2000;253(1):151-167. doi:10.1016/S0048-9697(00)00429-0
14. Pan S, Choi Y, Roy A, Jeon W. Allocating emissions to 4 km and 1 km horizontal spatial resolutions and its impact on simulated NO_x and O₃ in Houston, TX. *Atmospheric Environment*. 2017;164:398-415. doi:https://doi.org/10.1016/j.atmosenv.2017.06.026
 15. Molitor J, Jerrett M, Chang C-C, et al. Assessing Uncertainty in Spatial Exposure Models for Air Pollution Health Effects Assessment. *Environ Health Perspect*. 2007;115(8):1147-1153. doi:10.1289/ehp.9849
 16. Preston J, Rajé F. Accessibility, mobility and transport-related social exclusion. *Journal of Transport Geography*. 2007;15(3):151-160. doi:10.1016/j.jtrangeo.2006.05.002
 17. Zou B, Wilson JG, Zhan FB, Zeng Y. Air pollution exposure assessment methods utilized in epidemiological studies. *J Environ Monit*. 2009;11(3):475-490. doi:10.1039/B813889C
 18. Krzyżanowski M, Kuna-Dibbert B, Schneider J. *Health Effects of Transport-Related Air Pollution*. WHO Regional Office Europe; 2005.
 19. Beelen R, Hoek G, van den Brandt PA, et al. Long-Term Effects of Traffic-Related Air Pollution on Mortality in a Dutch Cohort (NLCS-AIR Study). *Environ Health Perspect*. 2008;116(2):196-202. doi:10.1289/ehp.10767
 20. Cesaroni G, Badaloni C, Gariazzo C, et al. Long-Term Exposure to Urban Air Pollution and Mortality in a Cohort of More than a Million Adults in Rome. *Environmental Health Perspectives*. 2013;121(3):324-331. doi:10.1289/ehp.1205862
 21. Chen H, Goldberg MS, Burnett RT, Jerrett M, Wheeler AJ, Villeneuve PJ. Long-Term Exposure to Traffic-Related Air Pollution and Cardiovascular Mortality. *Epidemiology*. 2013;24(1):35-43. doi:10.1097/EDE.0b013e318276c005
 22. Finkelstein MM, Jerrett M, Sears MR. Traffic Air Pollution and Mortality Rate Advancement Periods. *Am J Epidemiol*. 2004;160(2):173-177. doi:10.1093/aje/kwh181
 23. Finkelstein MM, Jerrett M, Sears MR. Environmental inequality and circulatory disease mortality gradients. *Journal of Epidemiology & Community Health*. 2005;59(6):481-487. doi:10.1136/jech.2004.026203
 24. Gehring U, Heinrich J, Krämer U, et al. Long-Term Exposure to Ambient Air Pollution and Cardiopulmonary Mortality in Women. *Epidemiology*. 2006;17(5):545-551. doi:10.1097/01.ede.0000224541.38258.87
 25. Hoek G, Brunekreef B, Goldbohm S, Fischer P, van den Brandt PA. Association between mortality and indicators of traffic-related air pollution in the Netherlands: a cohort study. *The Lancet*. 2002;360(9341):1203-1209. doi:10.1016/S0140-6736(02)11280-3
 26. Jerrett M, Finkelstein MM, Brook JR, et al. A Cohort Study of Traffic-Related Air Pollution and Mortality in Toronto,

- Ontario, Canada. *Environ Health Perspect.* 2009;117(5):772-777. doi:10.1289/ehp.11533
27. Maheswaran R, Elliott P. Stroke Mortality Associated With Living Near Main Roads in England and Wales: A Geographical Study. *Stroke.* 2003;34(12):2776-2780. doi:10.1161/01.STR.0000101750.77547.11
28. Rosenlund M, Bellander T, Nordquist T, Alfredsson L. Traffic-Generated Air Pollution and Myocardial Infarction. *Epidemiology.* 2009;20(2):265–271. doi:10.1097/EDE.0b013e318190ea68
29. Yorifuji T, Kashima S, Tsuda T, et al. Long-term exposure to traffic-related air pollution and the risk of death from hemorrhagic stroke and lung cancer in Shizuoka, Japan. *Science of The Total Environment.* 2013;443(Supplement C):397-402. doi:10.1016/j.scitotenv.2012.10.088
30. Turner MC, Krewski D, Diver WR, et al. Ambient Air Pollution and Cancer Mortality in the Cancer Prevention Study II. *Environ Health Perspect.* 2017;125(8):087013. doi:10.1289/EHP1249
31. Crouse DL, Peters PA, Hystad P, et al. Ambient PM_{2.5}, O₃, and NO₂ Exposures and Associations with Mortality over 16 Years of Follow-Up in the Canadian Census Health and Environment Cohort (CanCHEC). *Environ Health Perspect.* 2015;123(11):1180-1186. doi:10.1289/ehp.1409276
32. Thurston GD, Burnett RT, Turner MC, et al. Ischemic Heart Disease Mortality and Long-Term Exposure to Source-Related Components of US Fine Particle Air Pollution. *Environ Health Perspect.* 2016;124(6):785-794. doi:10.1289/ehp.1509777
33. Raaschou-Nielsen O, Andersen ZJ, Jensen SS, et al. Traffic air pollution and mortality from cardiovascular disease and all causes: a Danish cohort study. *Environmental Health.* 2012;11:60. doi:10.1186/1476-069X-11-60
34. Pedde M, Szpiro AA, Adar SD. Traffic Congestion as a Risk Factor for Mortality in Near-Road Communities: A Case-Crossover Study. *Am J Epidemiol.* 2017;186(5):564-572. doi:10.1093/aje/kwx130
35. Bidoli E, Pappagallo M, Birri S, Frova L, Zanier L, Serraino D. Residential Proximity to Major Roadways and Lung Cancer Mortality. Italy, 1990–2010: An Observational Study. *Int J Environ Res Public Health.* 2016;13(2). doi:10.3390/ijerph13020191
36. Halonen JI, Blangiardo M, Toledano MB, et al. Is long-term exposure to traffic pollution associated with mortality? A small-area study in London. *Environmental Pollution.* 2016;208(Part A):25-32. doi:10.1016/j.envpol.2015.06.036
37. Phan K, Tian DH, Cao C, Black D, Yan TD. Systematic review and meta-analysis: techniques and a guide for the academic surgeon. *Ann Cardiothorac Surg.* 2015;4(2):112-122. doi:10.3978/j.issn.2225-319X.2015.02.04

38. Tayarani M, Nadafianshahamabadi R, Poorfakhraei A, Rowangould G. Evaluating the cumulative impacts of a long range regional transportation plan: Particulate matter exposure, greenhouse gas emissions, and transportation system performance. *Transportation Research Part D: Transport and Environment*. 2018;63:261-275. doi:10.1016/j.trd.2018.05.014
39. Poorfakhraei A, Tayarani M, Rowangould G. Evaluating health outcomes from vehicle emissions exposure in the long range regional transportation planning process. *Journal of Transport & Health*. 2017;6:501-515. doi:10.1016/j.jth.2017.05.177
40. Hankey S, Marshall JD, Brauer M. Health Impacts of the Built Environment: Within-Urban Variability in Physical Inactivity, Air Pollution, and Ischemic Heart Disease Mortality. *Environmental Health Perspectives*. 2012;120:247-253. doi:https://doi.org/10.1289/ehp.1103806
41. Marshall JD, Nethery E, Brauer M. Within-urban variability in ambient air pollution: Comparison of estimation methods. *Atmospheric Environment*. 2008;42(6):1359-1369. doi:10.1016/j.atmosenv.2007.08.012
42. Karner AA, Eisinger DS, Niemeier DA. Near-Roadway Air Quality: Synthesizing the Findings from Real-World Data. *Environ Sci Technol*. 2010;44(14):5334-5344. doi:10.1021/es100008x